

# Research and Systems Design

---

## ***Department Postproduction Facilities Design***

Digital Media Lab  
Finishing Suite  
Audio Suite  
24 Hour Edit Suites  
Network Infrastructure

## ***Nims Center Postproduction Facilities Design***

HD Screening and Sound Mixing  
HD Finishing  
ADR Suite  
Machine Room  
Other Suites  
Drawings

## ***Postproduction Workflow Design***

Watermarks  
Flip Mavens

## ***Panels and Presentations***

In the Wake of Katrina (Preparing and Using Technology for a Crisis) – UFVA Summer 2008  
Cutting HD File-based Workflows Down to Size – UFVA Summer 2008

# Department Postproduction Facilities Design

I designed this facility to accommodate the large numbers of students majoring in Film, Theatre, and Communication Arts. It provides students access to the best technology, and gives us opportunities to teach advanced editing and postproduction techniques that were not possible at UNO five years ago. The design incorporates a shared storage server that enables students to access their work from any of over 46 workstations in the facility.

## Digital Media Lab

### Photo



25 Seat Digital Media Lab

### Statistics

#### Hardware:

- 25 HP Dual Core Workstations
- Vista 64 Bit Business
- 19" Monitors
- Multi-format DVD Burners
- Removable Media Readers

#### Software:

- Avid Media Composer
- Steinberg Nuendo
- Discreet Combustion

Adobe Creative Suite Design 3

Avid DVD

Roxio Easy DVD Burner

Final Draft

Microsoft Office

Synchroneyes Classroom Management

Frame Forge 3D Studio 2

ISIS Client Connection

#### Network:

Gigabit Ethernet

# Department Postproduction Facilities Design

## Finishing Suite

Photo



**High Definition Avid Finishing Suite**

## Statistics

### Hardware:

- HP Dual Quad Core Workstation
- Vista 64 Bit Business
- Dual 20" Monitors
- Multi-format DVD Burners
- Removable Media Readers
- Avid Nitris DX
- 4 Terabyte Avid Video Raid SR
- UVW 1500 Betacam Deck
- BR-DV 3000 DV Deck
- Panasonic DVD Recorder
- JVC HD Monitor
- LG LCD Client Monitor
- Mackie 1402 VLZ Mixer

### Software:

- Avid Media Composer
- Steinberg Nuendo
- Discreet Combustion
- Adobe Creative Suite Design 3
- Avid DVD
- Roxio Easy DVD Burner
- Final Draft
- Microsoft Office
- Synchroneyes Classroom Management
- Frame Forge 3D Studio 2
- ISIS Client Connection

### Network:

- Gigabit Ethernet

# Department Postproduction Facilities Design

## Audio Suite

### Photos



5.1 Surround Audio Mixing Suite



Whisper Room 4' x 4' Isolation Booth



# Department Postproduction Facilities Design

---

## Statistics

### Hardware:

HP Dual Quad Core Workstation  
Vista 64 Bit Business  
Dual 20" Monitors  
Multi-format DVD Burners  
AT 4065 Microphone  
Yamaha 1v96v2 Digital Mixer  
Midi Keyboard Controller  
KRK V4 5.1 Surround Monitoring  
V10 Sub Woofer  
Martin Sound Base Management

### Software:

Steinberg Nuendo  
Waves Restoration Plugins  
Halion Digital Sampler  
Halion String Edition  
Roxio Easy DVD Burner  
Microsoft Office  
ISIS Client Connection

### Network:

Gigabit Ethernet

# Department Postproduction Facilities Design

## 24 Hour Edit Suites

Photos



7 Private Editing Suites

## Statistics

### Hardware:

- HP Dual Quad Core Workstation
- Vista 64 Bit Business
- Dual 20" Monitors
- Multi-format DVD Burners
- Removable Media Readers
- M-Audio Speakers
- Mini Monitor Mixers

### Software:

- Avid Media Composer
- Steinberg Nuendo
- Discreet Combustion
- Adobe Creative Suite Design 3
- Avid DVD
- Roxio Easy DVD Burner
- Final Draft
- Microsoft Office
- Synchroneyes Classroom Management
- Frame Forge 3D Studio 2
- ISIS Client Connection

### Network:

- Gigabit Ethernet

# Department Postproduction Facilities Design

## FTCA Network Infrastructure

### Photos



Media Transfer Center



Capture Stations and ISIS Servers

# Department Postproduction Facilities Design

## 24 Hour Suite Statistics

### Hardware:

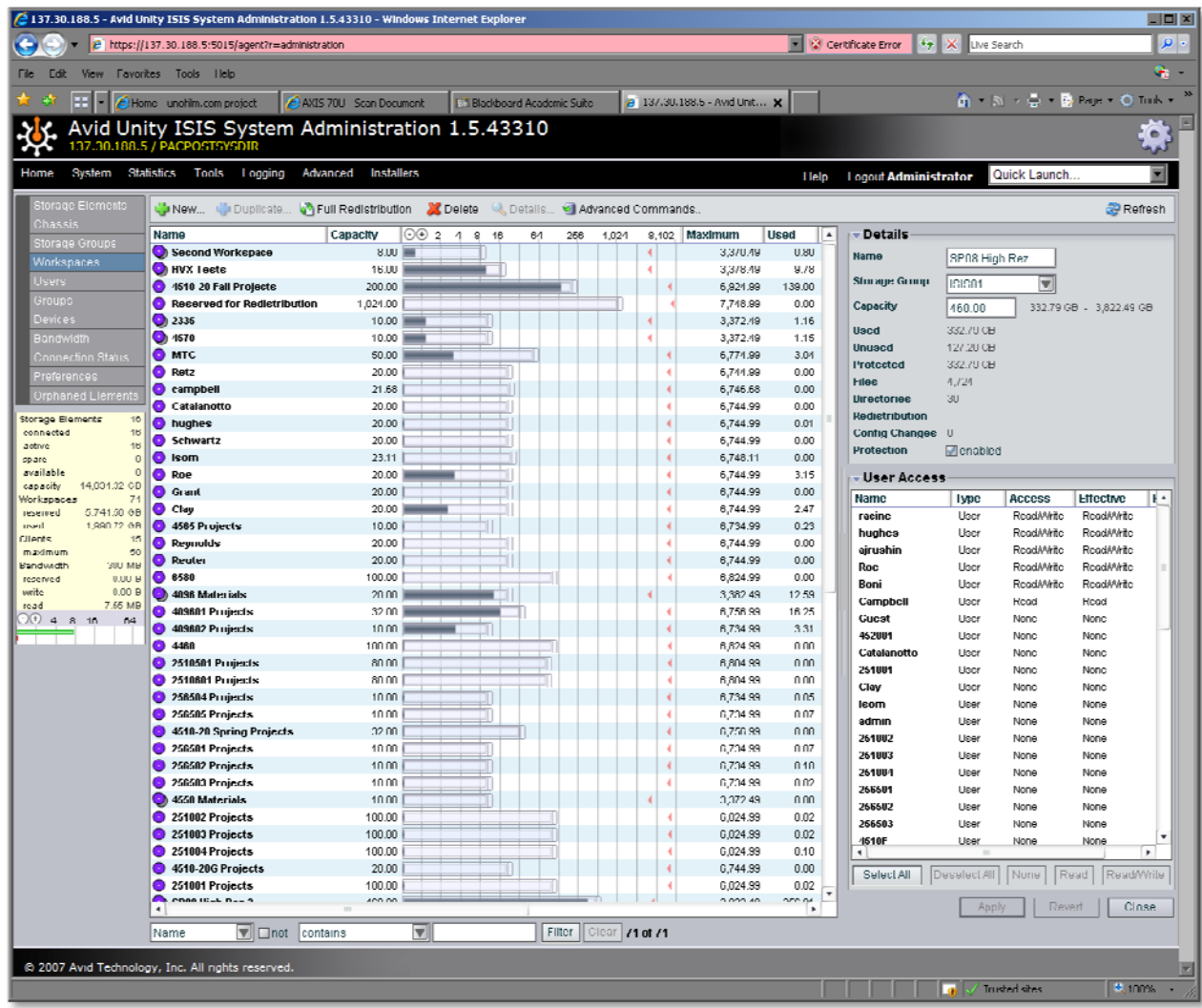
4 HP Dual Core Workstations  
Vista 64 Bit Business  
20" Monitors  
Multi-format DVD Burners  
Mackie Mixer  
ADK Patchbay  
Uv1800 Betacam Decks  
BR-DV 3000/6000 DV Decks  
Panasonic DVD Burners  
M-Audio Speakers  
Video Compression Server

### Software:

Avid Media Composer  
Steinberg Nuendo  
Discreet Combustion  
Adobe Creative Suite Design 3  
Avid DVD  
Roxio Easy DVD Burner  
Microsoft Office  
ISIS Client Connection

### Network:

Avid Unity ISIS  
16 Terabyte Shared  
71 Virtual Workspaces  
50 Users  
46 Workstation Clients  
10 GB Uplink  
Cisco 4948 Gigbit Switch

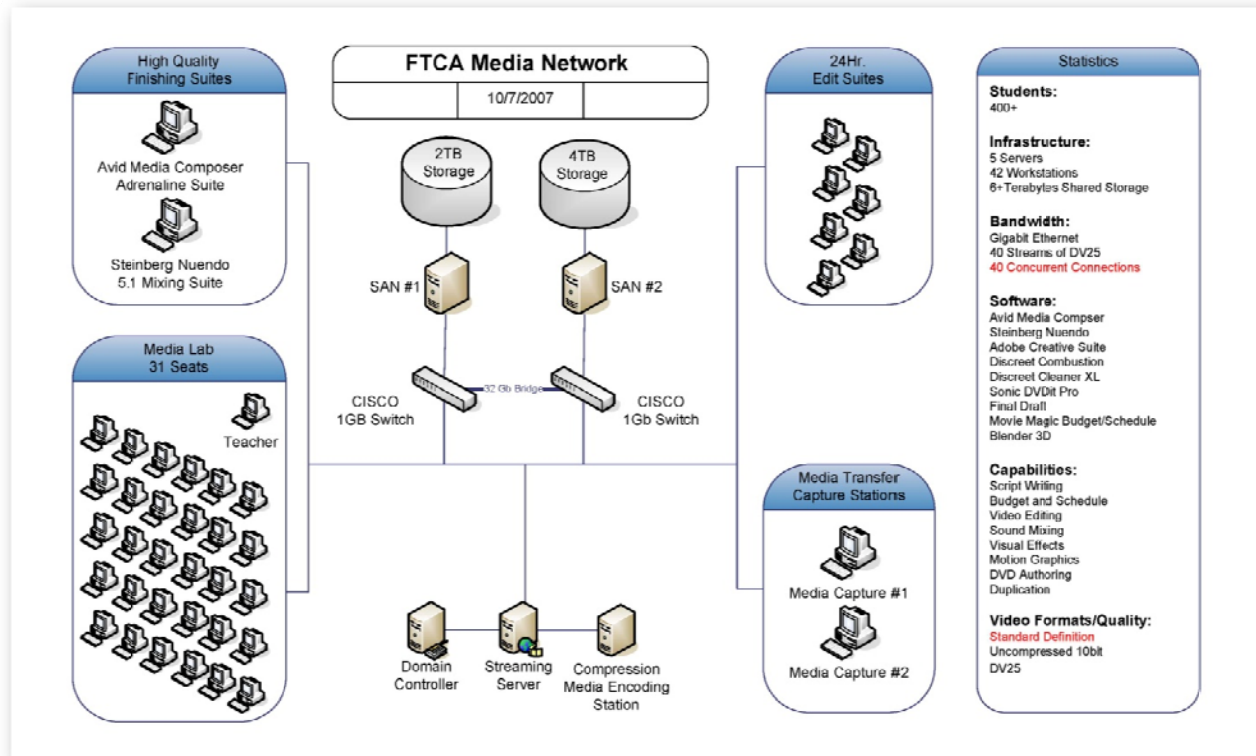


Avid ISIS System Interface and 71 Virtual Drive Workspaces

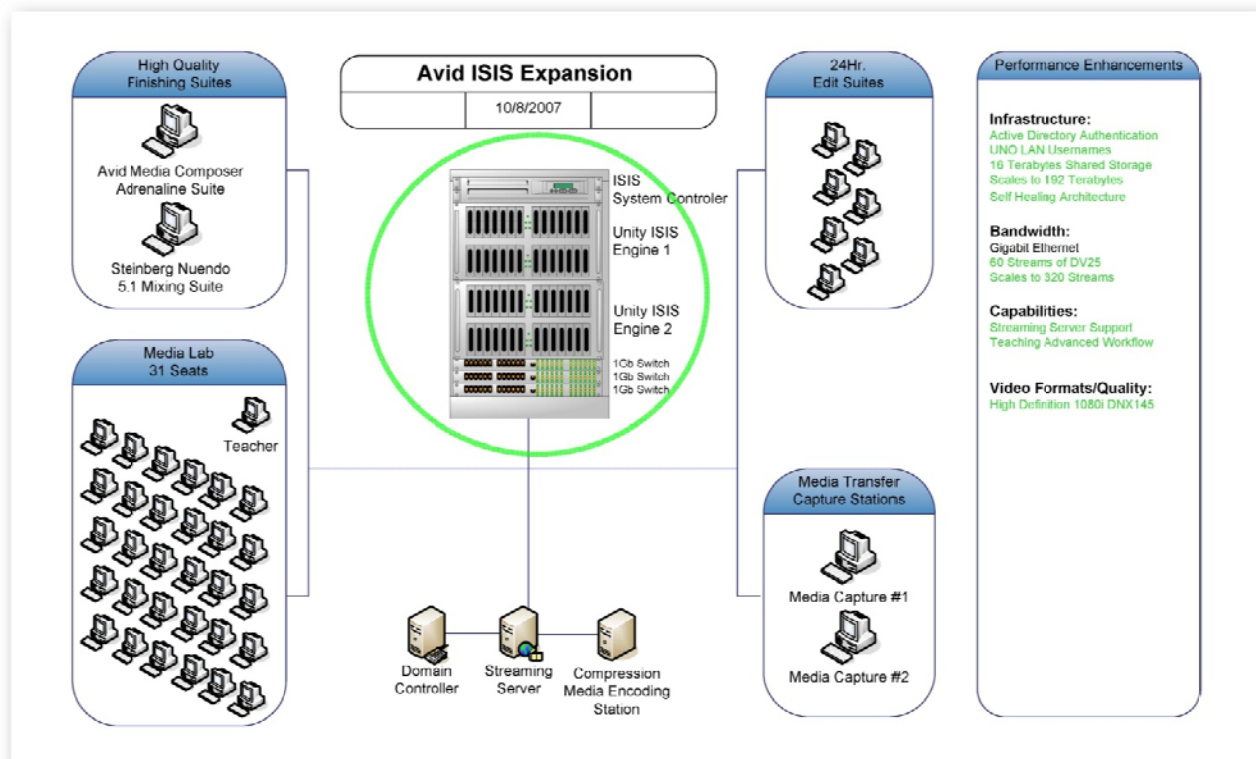


# Department Postproduction Facilities Design

## Schematics



Initial FTCA Media Network



FTCA Media Network with ISIS Shared Storage

This page is intentionally blank.

## Nims Center Postproduction Facilities Design

---

The Nims Center postproduction facility is an HD capable screening, editing, and audio mixing facility located in the Robert E. Nims Center for Entertainment Arts in New Orleans. It was funded by a grant from the Department of Economic Development with an equipment budget of approximately \$380,000.00. The facility was built to encourage film productions that were already shooting in Louisiana to edit and finish films here in New Orleans. The goal is to provide opportunities for UNO Film students to gain postproduction experience through internships on feature films that use the facility. **I designed the facility and supervised its construction.**

### HD Screening and Sound Mixing

#### Photos



#### Description

The screening room is equipped with a JVC HD 2K projector and a Stewart Microperf screen. High quality highly accurate audio monitoring is achieved with three Genelec 1037b monitors with dual Subs and four Genelec 8040 surround speakers controlled with a Martin Sound monitor control system. The Euphonix System 5 MC controller is capable of controlling all of the major post production systems in the facility and can even be attached to Avid DS for basic timeline and editing controls. All signals in the facility can be routed to this room. Seating capacity is 30. The room is accessible to paying commercial clients as well as graduate students doing thesis work.

# Nims Center Postproduction Facilities Design

## HD Finishing

### Photos



### Description

The HD finishing suite is equipped with a Sony High Definition Monitor, Yamaha 01v96 Mixer, Genelec 8040 5.1 surround monitoring and access to any of the computer systems in the Machine Room. There is a producer's desk that can be set up with personal monitor and internet access. There is also ample room to sit and discuss and create. Any signal from any deck, computer or routed device can be accessed from the room, and anything that is done in the room can be displayed in any other room. It is simple to route the project being worked on to the screening room for director screening directly from Avid, or to the ADR suite for dialog recording without leaving the room.

The facility is compatible with SD and HD video at 480, 720 and 1080i and p at frame rates of 60, 59.94, 30, 29.976, 25, 24, and 23.98. Almost all monitoring systems are auto sensing between SD and HD to reduce patching.



# Nims Center Postproduction Facilities Design

## ADRSuite

### Photos



| 10/10/2008

### Description

The Euphonix MC controller can remotely Control Protocols, Nuendo, Avid DS, or Avid Media Composer. Picture can be routed to monitors independently from any source. Two DSL lines allow remote monitoring with a host of CODECS as well as telephone hybrid. Microphones are connected to a Yamaha 01v96v2 mixer and routed via MADI to the Euphonix router then to any recording device. Monitoring is done via a pair of Genelec 8048 reference monitors.

The booth is lined with a sound dampening carpet material that is compatible with Velcro. Auralex sound absorption and diffusion material can be placed on the walls at any location to customize the room response at any mic location.



# Nims Center Postproduction Facilities Design

## Machine Room

### Photos





# Nims Center Postproduction Facilities Design

## Description

The Machine Room is centrally located to the Finishing Suite, ADR booth, and Main Screening Room. It is equipped with HD serial digital routing, and 12 channels of 56 channel MADI digital audio routing. The Gefen router can route any one of four dual monitor computer displays with keyboard and mouse control to any of the 4 rooms. This allows for total silence in the suites and control of any system. The rooms become spaces that are dedicated to types of work instead of equipment. ADR, for instance can be done in Protocols, Nuendo or directly into Avid Symphony or DS from the same room. The Unity Shared storage system allows access to all project data from any computer system. The third rack is pre-wired to the router with 4 slots to house any digital or analog rental deck needed.



Evertz Master Clock ►

◄ Avid Unity 5.0 Shared Storage  
Tectronics Waveform Monitor ►

nVision 128 Channel Router ►

◄ Dolby Digital Encoder

◄ Dolby Digital Decoder

◄ Martin Sound Monitor Management

◄ Protocols Video Sync

◄ Big Ben Word Clock

◄ Apogee AD 8000 Converter

◄ Euphonix 12 Channel MADI Router

◄ Euphonix 48 Ch Format Converter

◄ Steinberg Nuendo with RME MADI

◄ Avid DS/Symphony Nitris

Gefen 4 x 4 KVM Matrix ►  
(Routes computer screens to any room)

Protocols with SSL MADI Interface ►



# Nims Center Postproduction Facilities Design

## Other Suites and Screens

### Description

The offline suite includes an editors room, and assistant room and a private screening room with 5.1 surround sound monitoring. This facility is designed to be rented to films shooting locally for post during shooting.

### Photos



**Editing Suite and Screening Control**

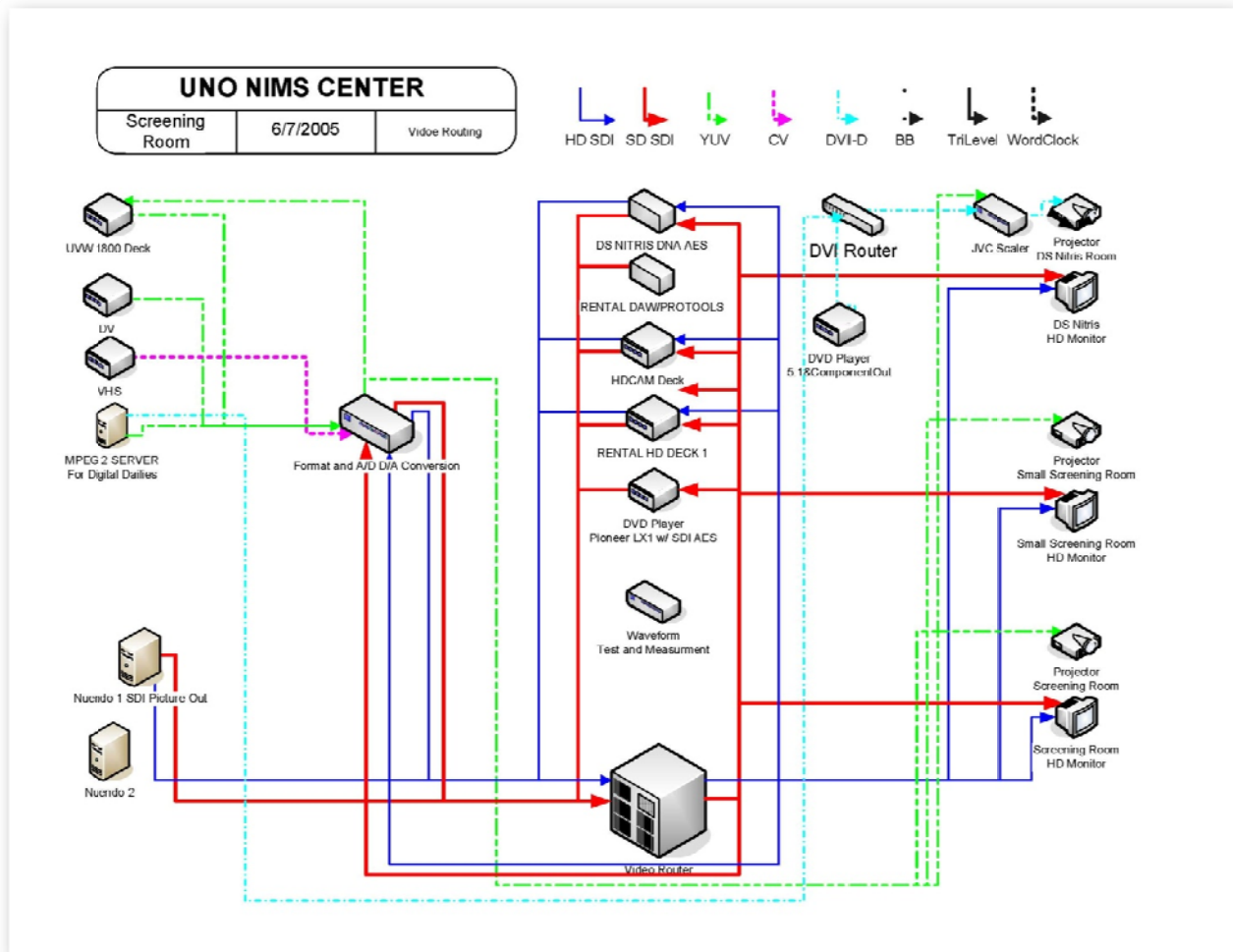
### Statistics

|  |   |  |
|--|---|--|
| <b>Hardware:</b><br>HP 4 Core Workstations<br>24" DVI LCDMonitor<br>Yamaha 01v96v2 Digital Mixer<br>UWV1800 Betacam Decks<br>M-Audio Speakers<br><br><b>Screening Room:</b><br>LCD Projection<br>Full Video and Audio Routing<br>Genlec 8020 Surround Monitors | <b>Software:</b><br>Avid Media Composer<br>Discreet Combustion<br>Adobe Creative Suite Design 3<br>Roxio Easy DVD Burner<br>Unity 5.0 Client Connection | <b>Network:</b><br>Avid Unity 5.0<br>8 Terabyte Shared<br>4Gbit Fibre Channel<br>Optical Connections |
|--|---|--|



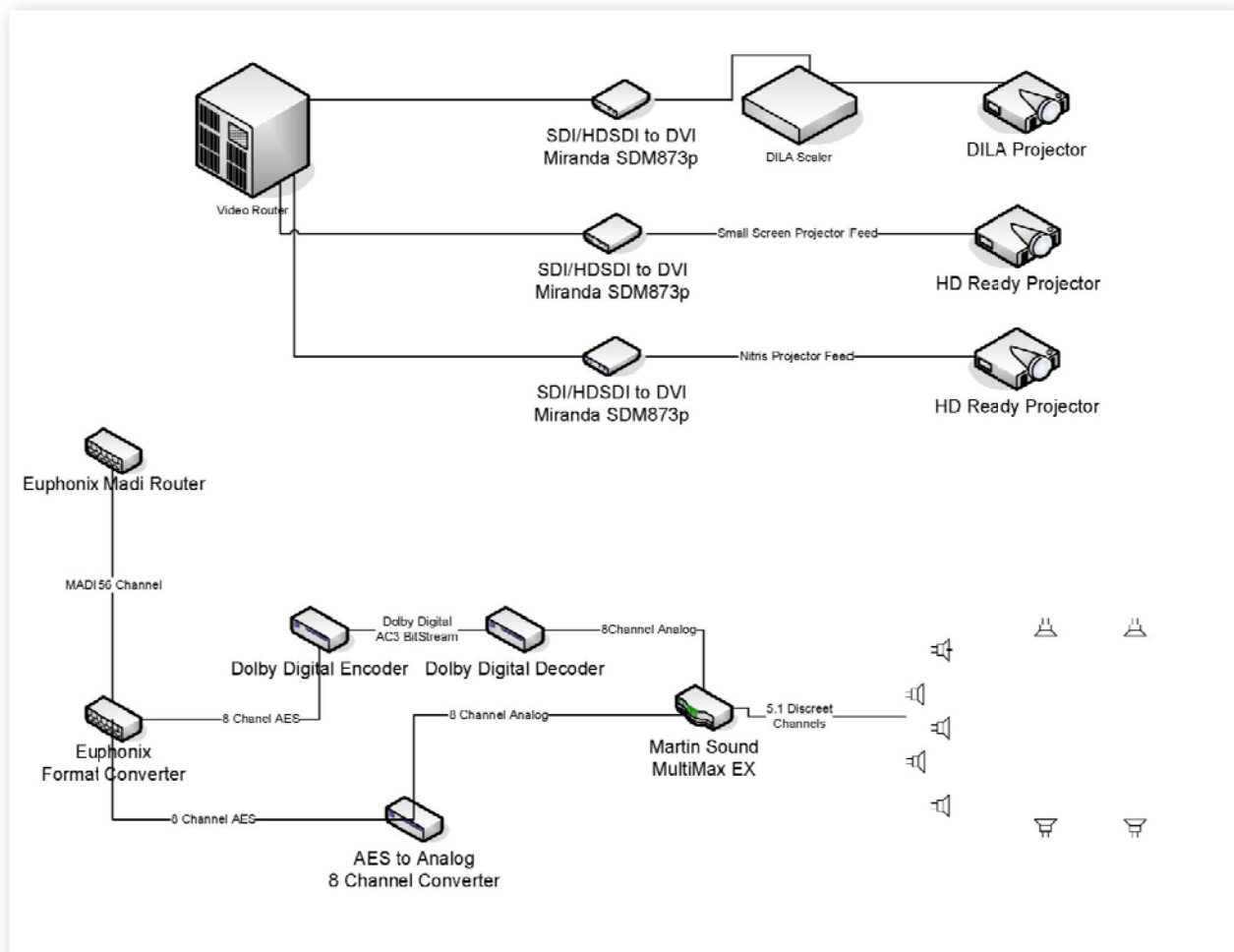
# Nims Center Postproduction Facilities Design

## Nims Center Visio Design Drawings



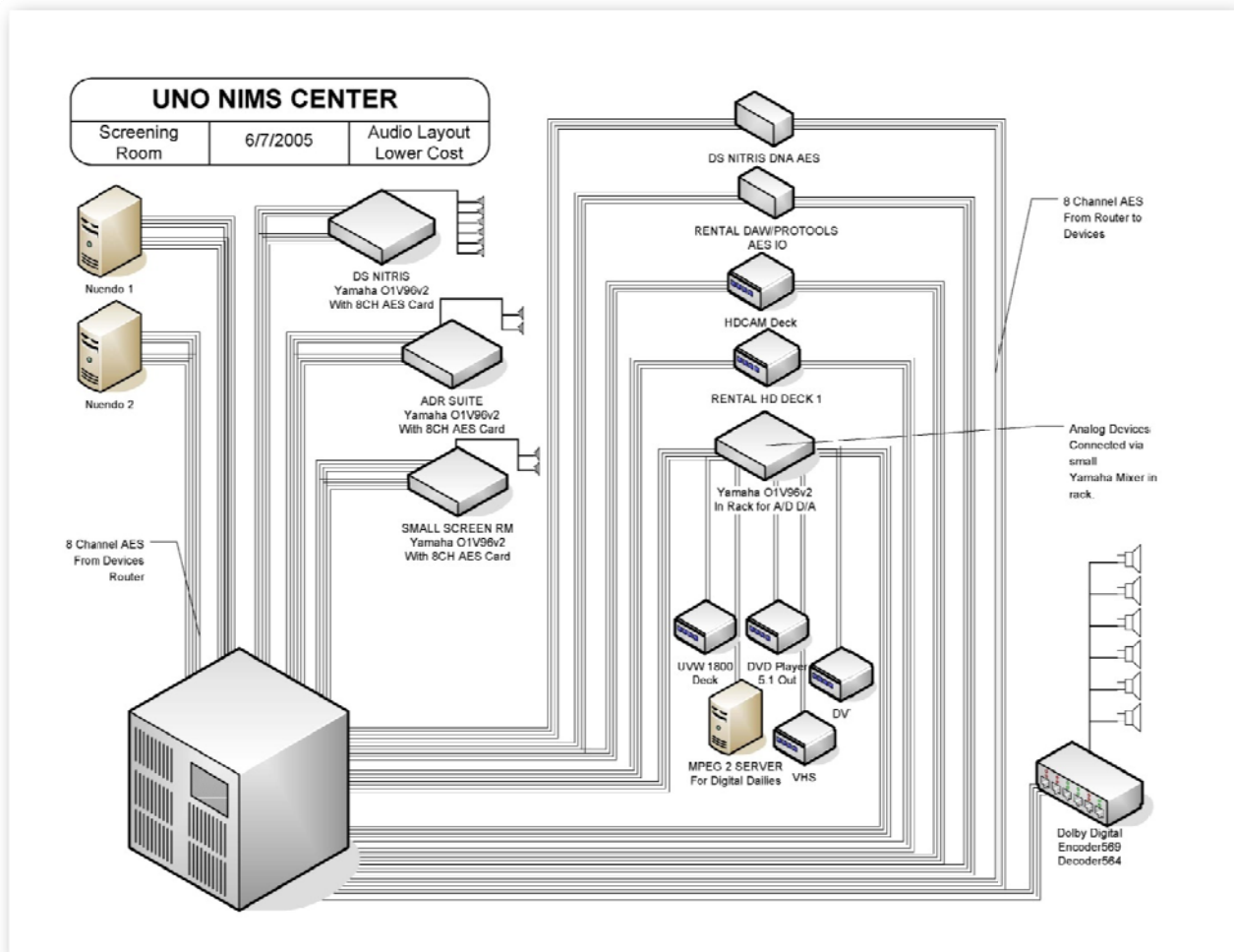
Video Routing

# Nims Center Postproduction Facilities Design



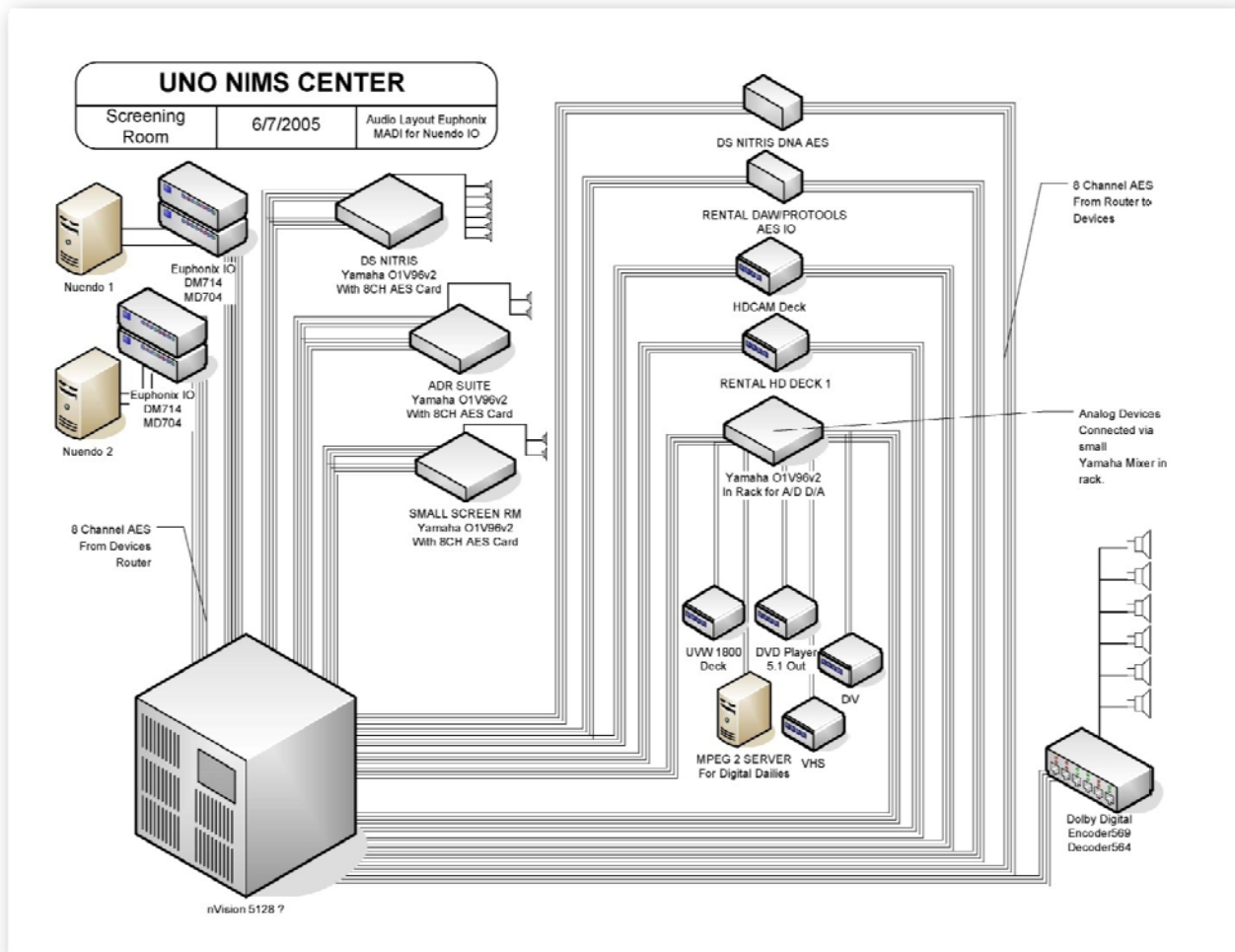
Audio Monitoring and Projection

# Nims Center Postproduction Facilities Design



Audio Routing

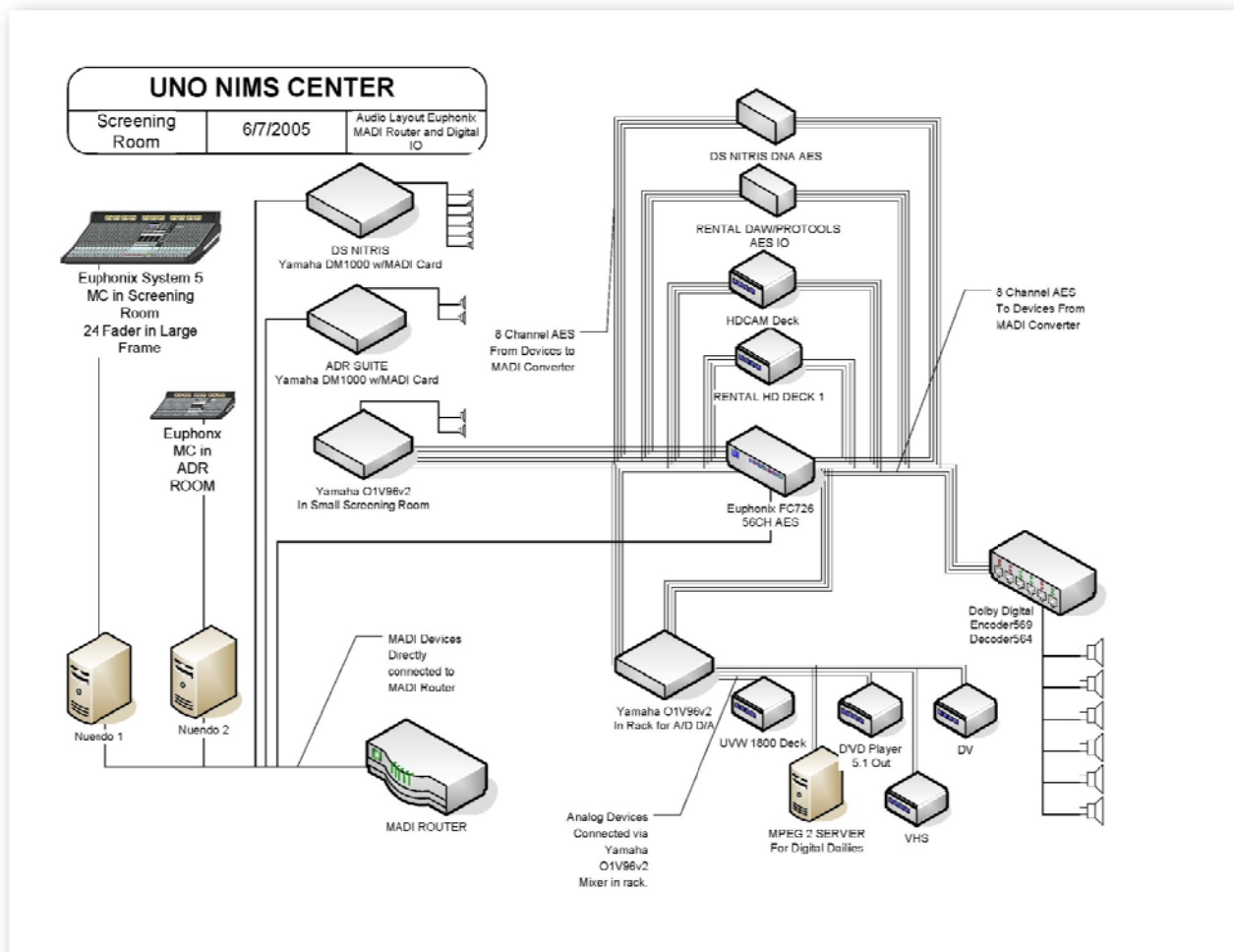
# Nims Center Postproduction Facilities Design



Better Audio Routing System Using nVision Router and Euphonix IO AES

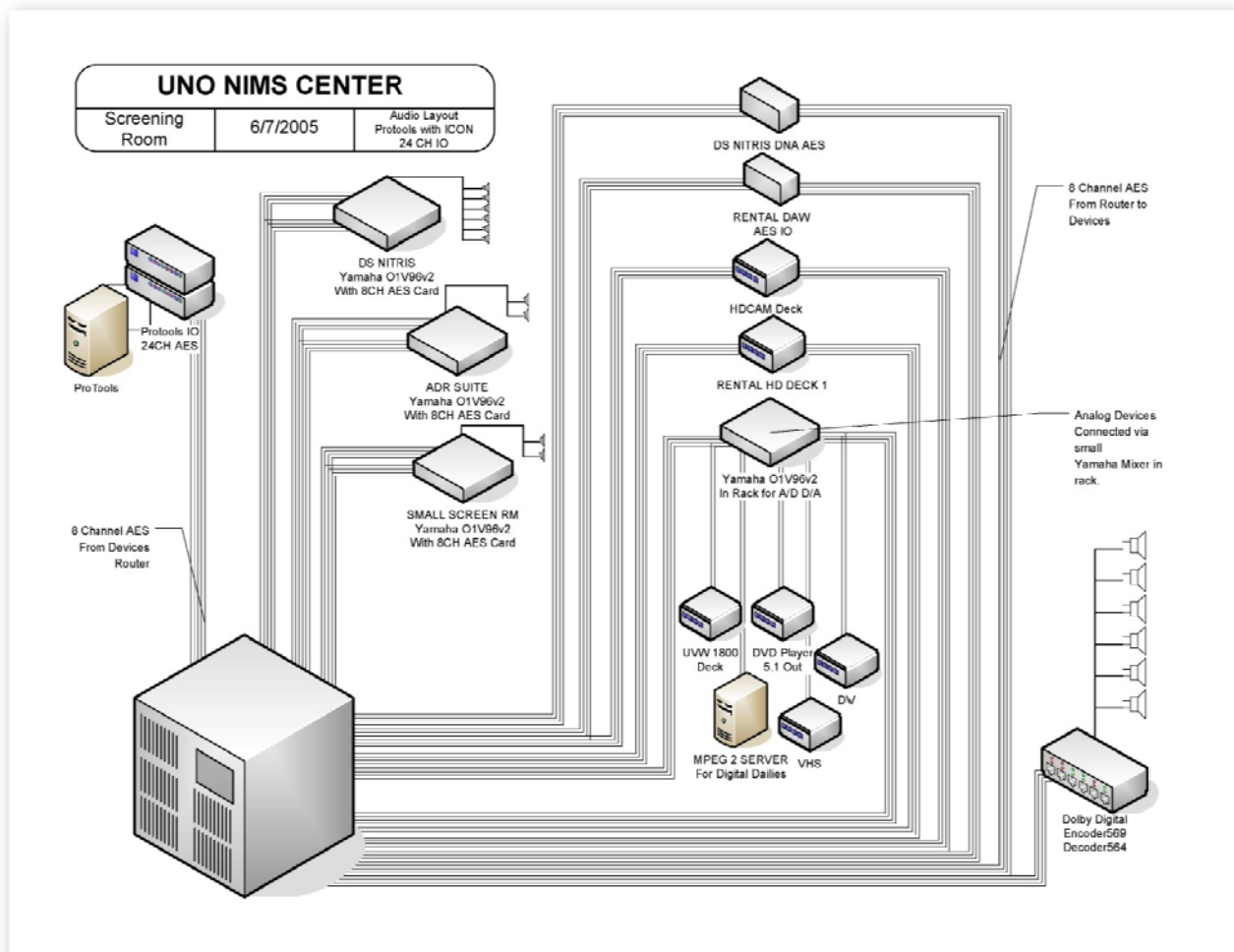


# Nims Center Postproduction Facilities Design



Final Audio Design Using Euphonix MADI Router and System 5 MC

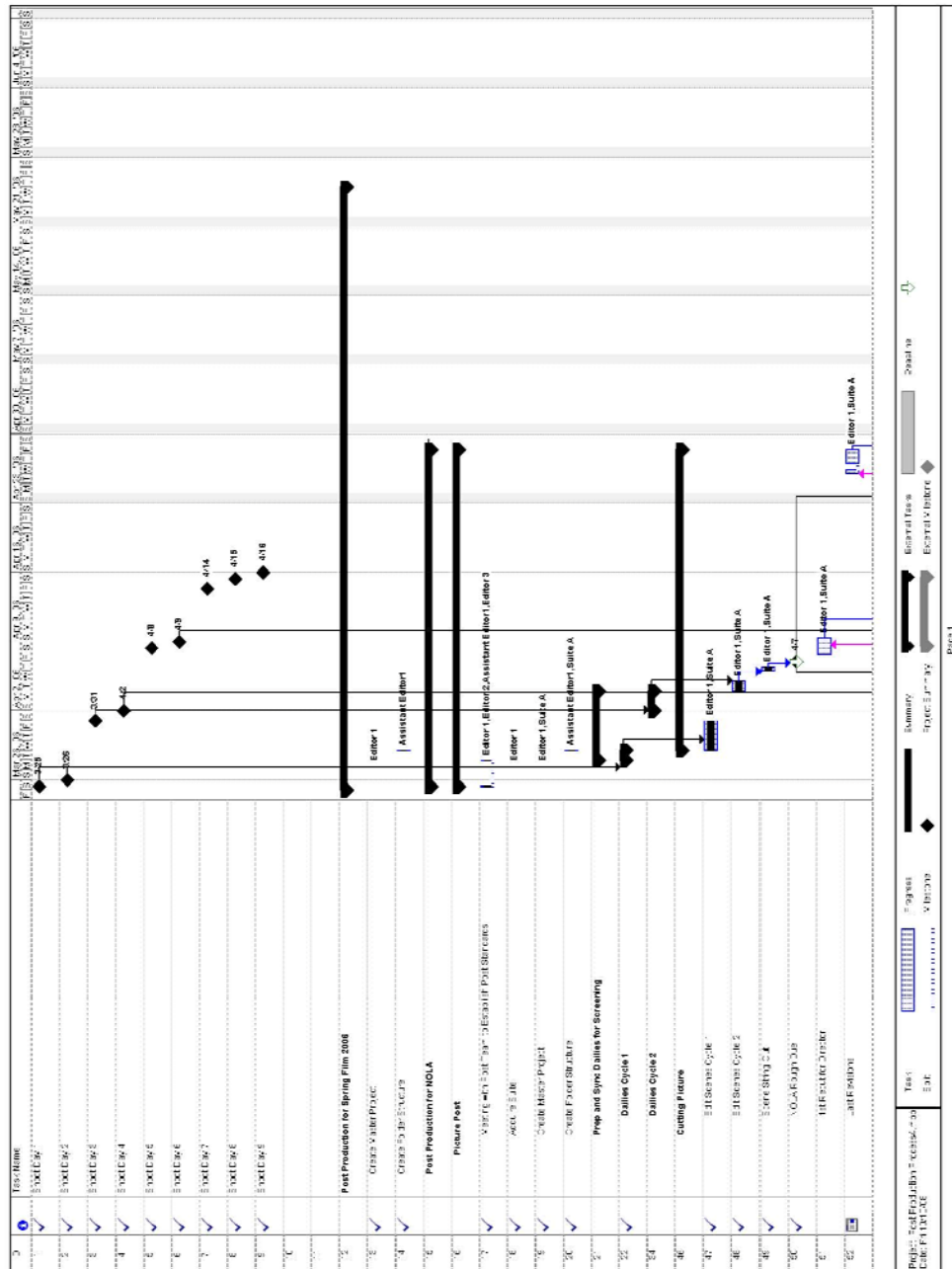
# Nims Center Postproduction Facilities Design



Older Audio System Design with Protools

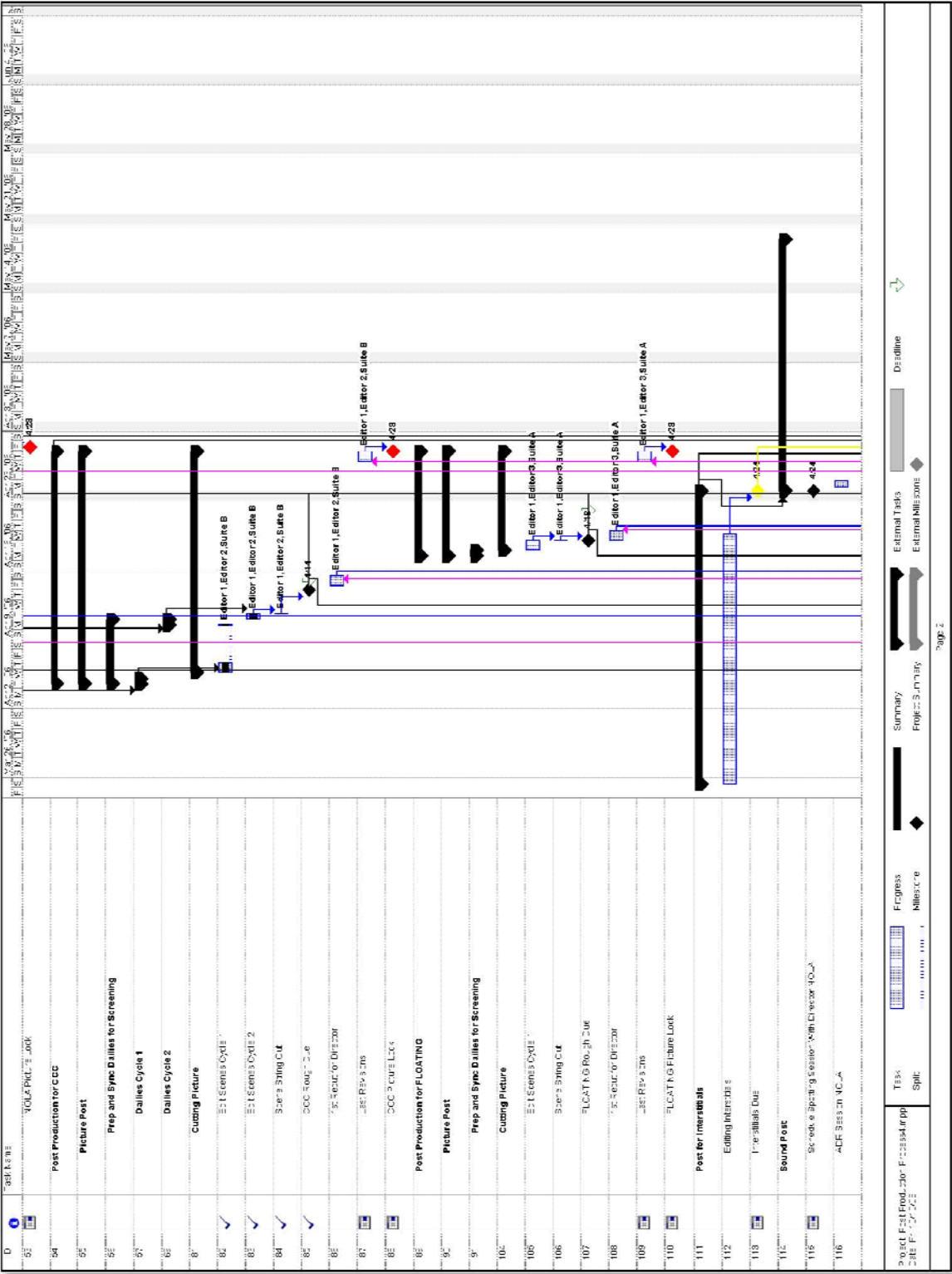
## Watermarks

Serving as postproduction supervisor on the spring film Watermarks, I developed a workflow that allowed 3 separate student crews to post three separate short films and combine those shorts together with interstitial material to make one coherent film. The project required tight schedules and coordination to bring together the material created by four production crews, four editors, and four sound mixers along with graphic artists and musicians and complete what is normally a two semester project in one semester after Katrina.



# Postproduction Workflow Design

Robert Racine Assistant Professor of Digital Technology | 10/10/2008



Production Project Workflow Gant Chart

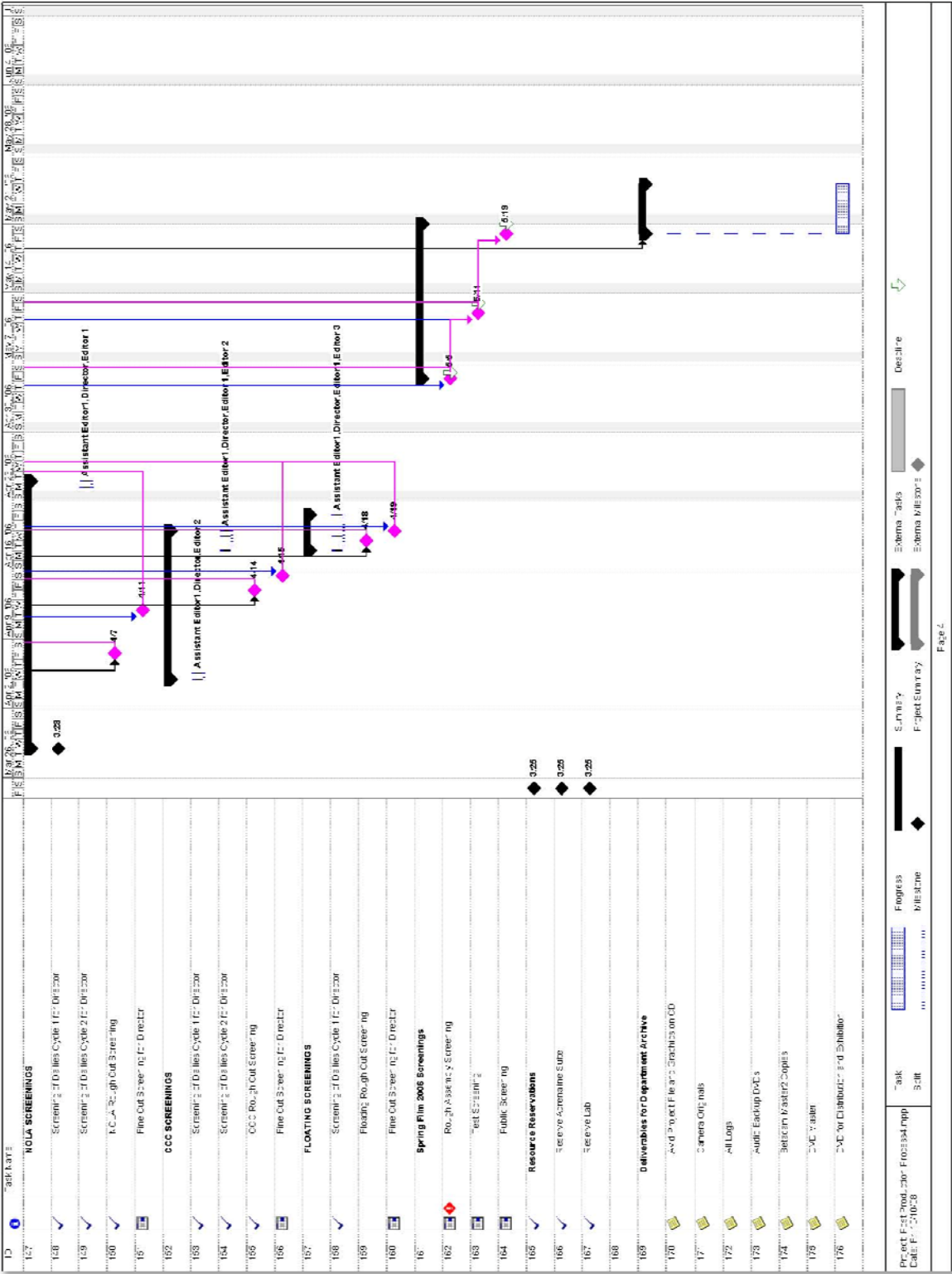


## Production Project Workflow Gant Chart



Postproduction Workflow Design

Robert Racine Assistant Professor of Digital Technology | 10/10/2008

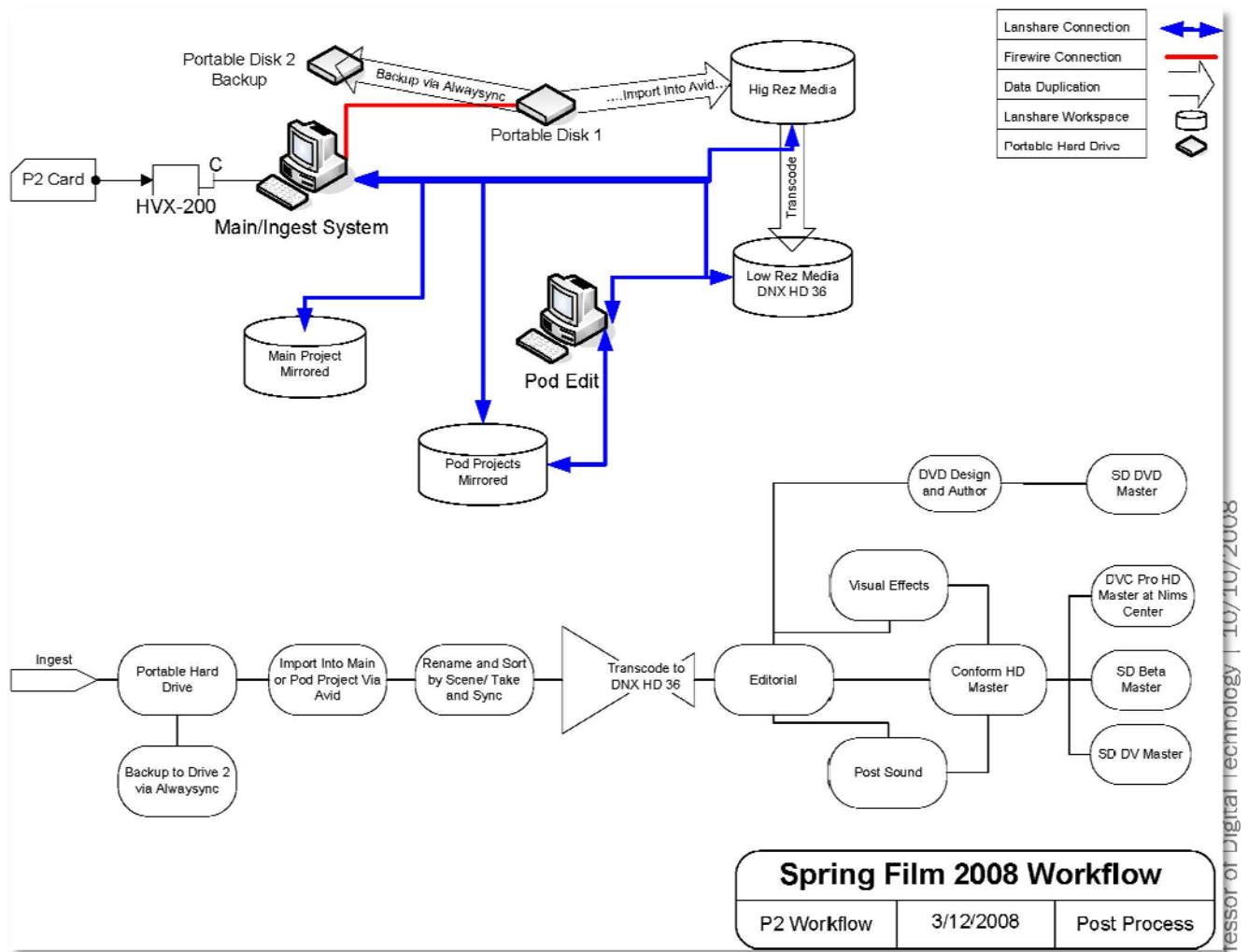


Production Project Workflow Gant Chart

# Postproduction Workflow Design

## Flip Mavens

The department acquired 8 Panasonic HVX 200 HD cameras in January of 2008. Flip Mavens was the first film that we shot using the P2 HD file based system. I designed a system that would allow for backup of files and ingest into Avid. We also needed to down rez the files to reduce bandwidth on the network while working. My work on this project plus the four years of experience building the department and Nims Center post facilities culminated in August of 2008 when I was invited by Avid Technology to do a presentation on their behalf on file based HD workflow at the University Film and Video Association annual conference in Colorado Springs. Details of that presentation are included in this document.



Workflow schematic for P2 media with 720p24n HD source

This page is intentionally blank.